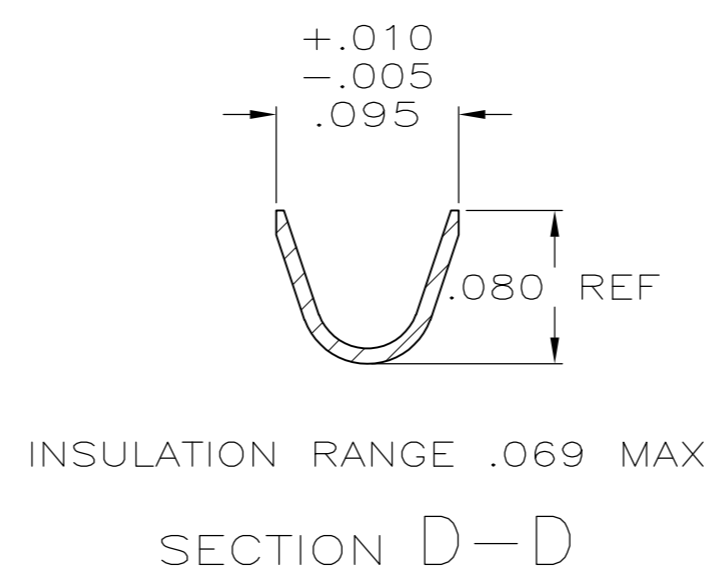
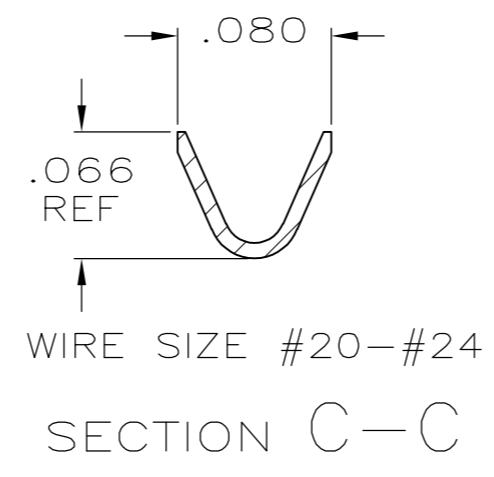
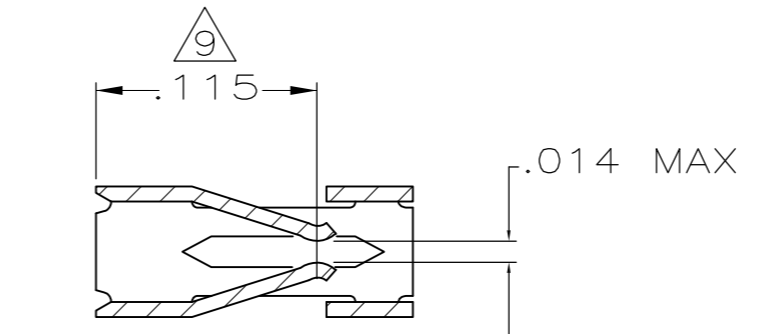
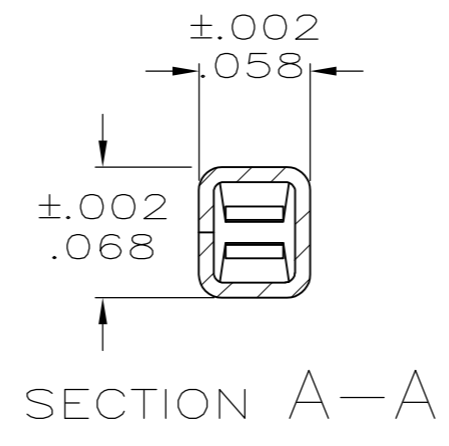
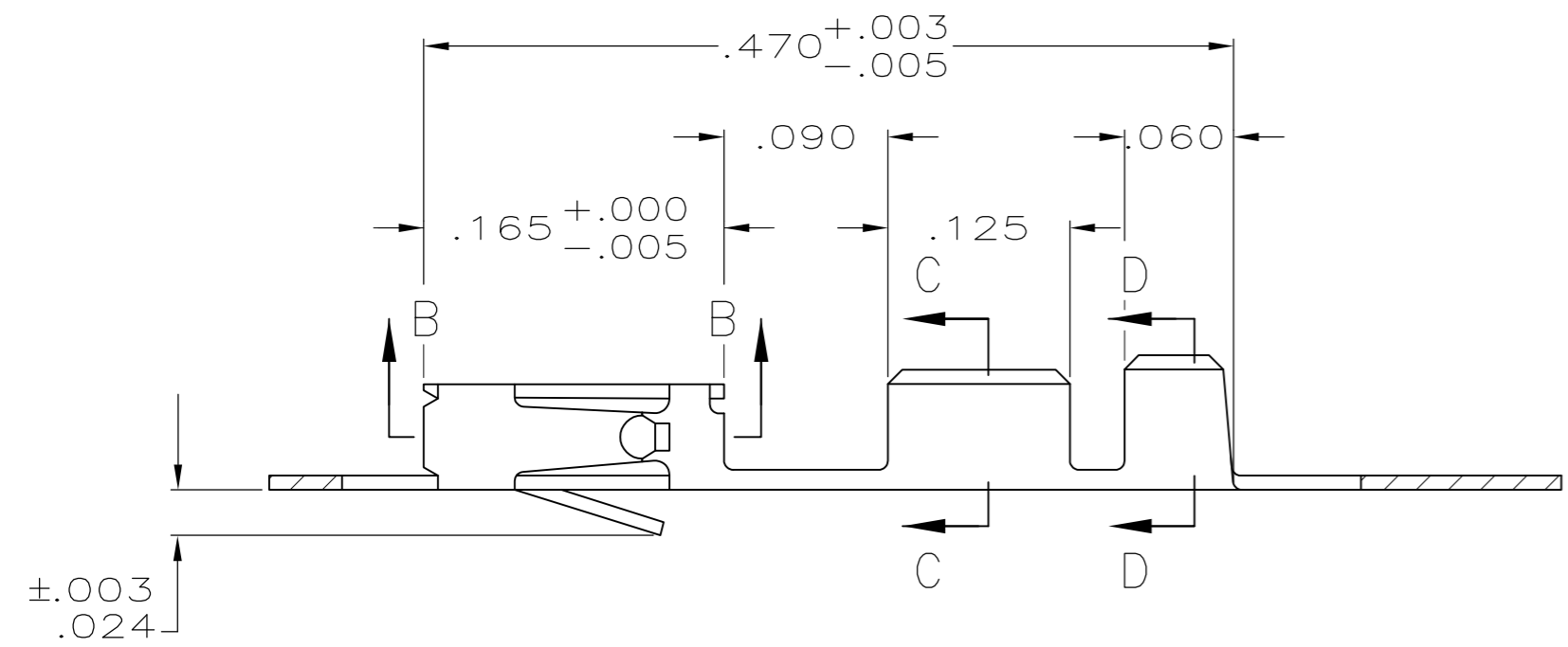
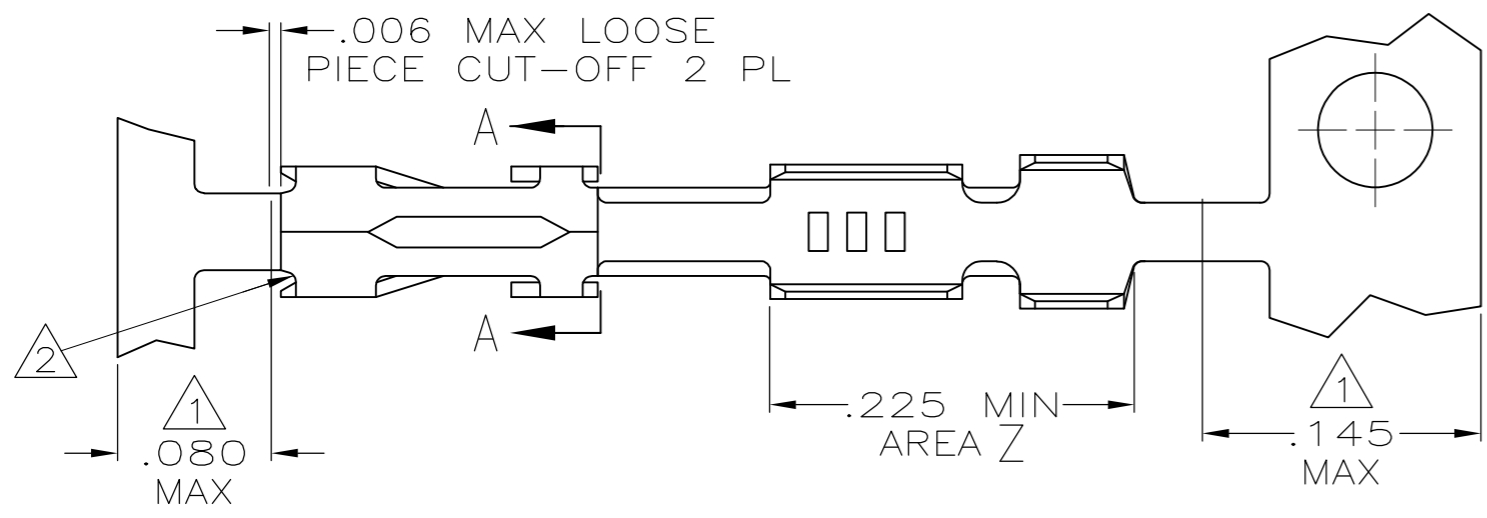


THIS DRAWING IS UNPUBLISHED. RELEASED FOR PUBLICATION  
 © COPYRIGHT - By - ALL RIGHTS RESERVED.

| LOC | DIST | REVISIONS   |                           |         |        |
|-----|------|-------------|---------------------------|---------|--------|
| P   | LTR  | DESCRIPTION | DATE                      | DWN     | APVD   |
| AD  | 00   | M1          | REVISED PER ECO-11-004917 | 11MAR11 | RK HMR |



- 1 GOLD PLATING IS NOT REQUIRED IN THIS AREA.
- 2 CUT-OUTS ON THE BOX ARE AT MANUFACTURERS OPTION.
- 3 THIS TERMINAL IS REELED FOR THE STANDARD APPLICATOR.
- 4 THIS TERMINAL IS REELED FOR THE MINI APPLICATOR.
- 5 .000015 GOLD ON THE CONTACT AREA, GOLD FLASH ON THE REMAINDER ALL OVER .000050 NICKEL.
- 6 .000030 GOLD OVER .000050 NICKEL.
- 7 .000030 GOLD ON THE CONTACT AREA, GOLD FLASH ON THE REMAINDER ALL OVER .000050 NICKEL.
- 8 .000100-.000200 BRIGHT TIN-LEAD OVER .000050 NICKEL.
- 9 POINT OF MEASUREMENT FOR PLATING THICKNESS (INSIDE BEAMS).
- 10 SHEARED EDGES ARE PERMITTED TO BE UNPLATED.
- 11 .000015 GOLD ON THE CONTACT AREA, .000100-.000200 BRIGHT TIN-LEAD ON AREA Z, ALL OVER .000050 NICKEL.
- 12 .000030 GOLD ON THE CONTACT AREA, .000100-.000200 BRIGHT TIN-LEAD ON AREA Z, ALL OVER .000050 NICKEL.
- 13 .000030 GOLD ON CONTACT AREA, .000100-.000200 TIN ON AREA Z, ALL OVER .000050 NICKEL.
- 14 .000015 GOLD ON CONTACT AREA, .000100-.000200 TIN ON AREA Z, ALL OVER .000050 NICKEL.

| REMARKS  | FINISH | LOOSE PIECE PART NUMBER | PART NUMBER |           |           |
|----------|--------|-------------------------|-------------|-----------|-----------|
| 4        | 10     | 14                      | 2-87195-5   | 2-87195-4 |           |
| 4        | 10     | 13                      | 2-87195-6   | 2-87195-3 |           |
| 4        | 10     | 12                      | 2-87195-1   | 2-87195-0 |           |
|          | 4      | 10                      | 11          | 1-87195-8 | 1-87195-7 |
| OBSOLETE | 4      | 8                       | 1-87195-6   | 1-87195-5 |           |
| OBSOLETE | 3      | 8                       | 1-87195-6   | 1-87195-4 |           |
| OBSOLETE | 4      | 7                       | 1-87195-0   | 87195-9   |           |
| OBSOLETE | 3      | 7                       | 1-87195-0   | 87195-8   |           |
| OBSOLETE | 4      | 6                       | 87195-7     | 87195-6   |           |
| OBSOLETE | 3      | 6                       | 87195-7     | 87195-5   |           |
| OBSOLETE | 4      | 5                       | 87195-4     | 87195-3   |           |
| OBSOLETE | 3      | 5                       | 87195-4     | 87195-2   |           |

|  |  |                  |             |        |                           |
|--|--|------------------|-------------|--------|---------------------------|
| THIS DRAWING IS A CONTROLLED DOCUMENT.   |  | DWN              | L.D.RINGLEY | 1-6-86 | <b>TE</b> TE Connectivity |
| DIMENSIONS: INCHES   |  | CHK              | J.L.GESFORD | 1-6-86 |                           |
| TOLERANCES UNLESS OTHERWISE SPECIFIED:   |  | APVD             | J.GESFORD   | 1-6-86 |                           |
| 0 PLC ± -<br>1 PLC ± -<br>2 PLC ± -<br>3 PLC ± .005<br>4 PLC ± -<br>ANGLES ± -<br>FINISH SEE TABLE |  | PRODUCT SPEC     | 108-25,021  |        |                           |
| MATERIAL: CU-SN-P, ALLOY   |  | APPLICATION SPEC | 114-25,003  |        | SIZE: A2                  |
|  |  | WEIGHT           | -           |        | CAGE CODE: 00779          |
|  |  | CUSTOMER DRAWING |             |        | DRAWING NO: C-87195       |
|  |  | SCALE            | 10:1        |        | SHEET: 1 of 1             |
|  |  | REV              | M1          |        | RESTRICTED TO: -          |